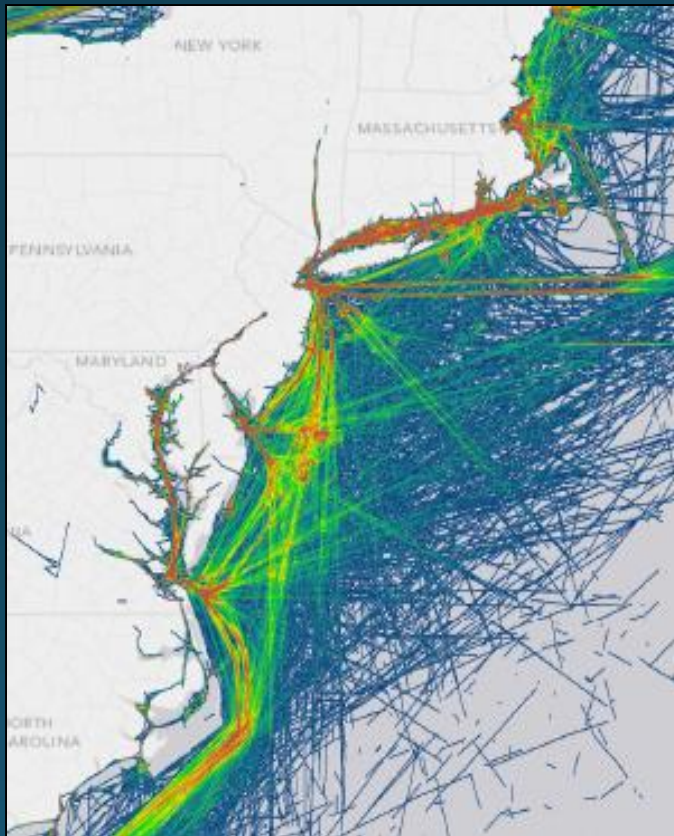


# Mid-Atlantic Regional Planning Body (MidA RPB)

Formally established in April 2013 by the  
National Ocean Policy

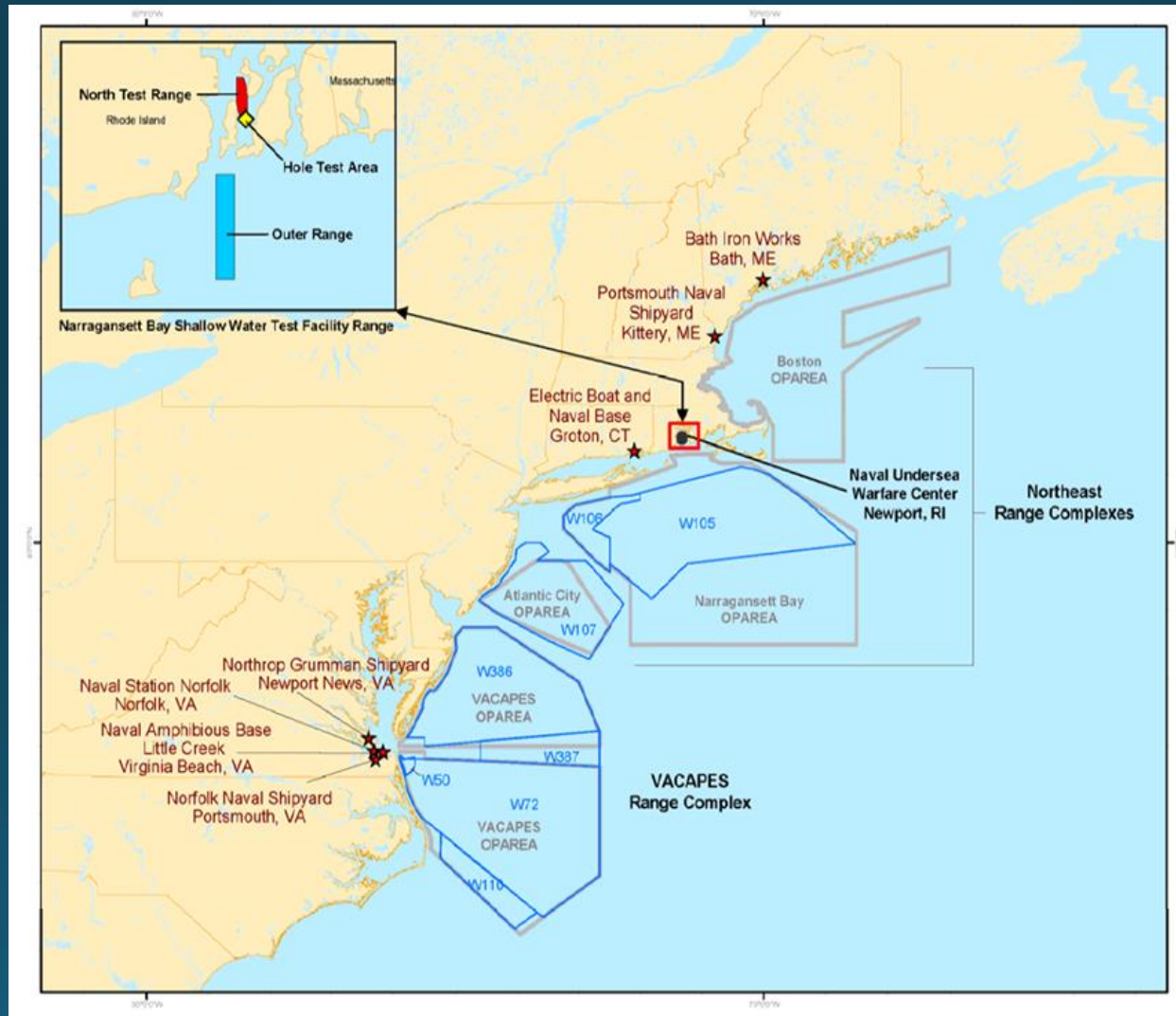


- *to guide the protection, maintenance, and restoration of America's oceans and coasts.*
- *to coordinate and implement regional ocean planning with state, federal, tribal, and Fishery Management Council representatives.*

# Fishing- Commercial and Recreational

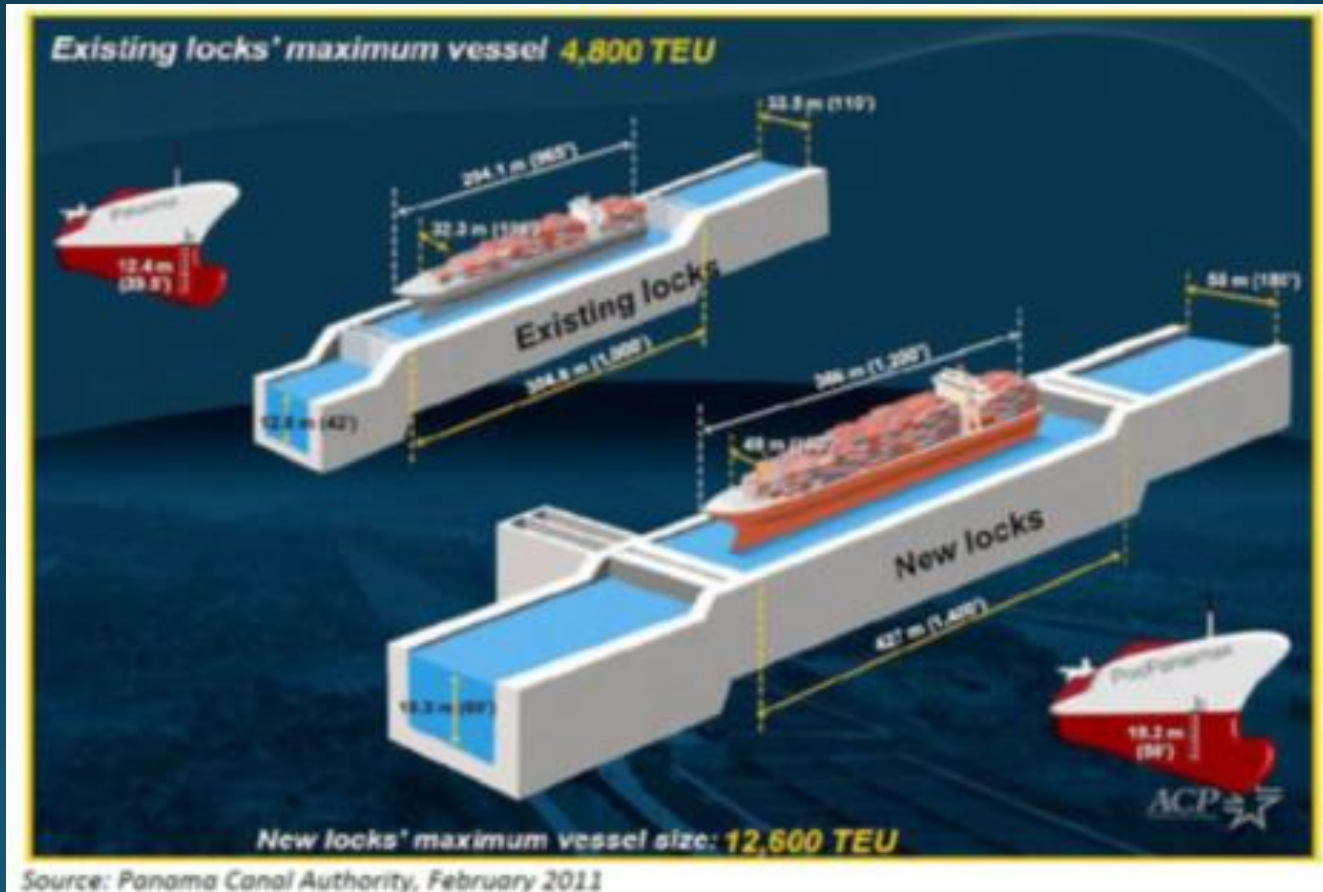


# DOD Testing and Training Areas - Navy

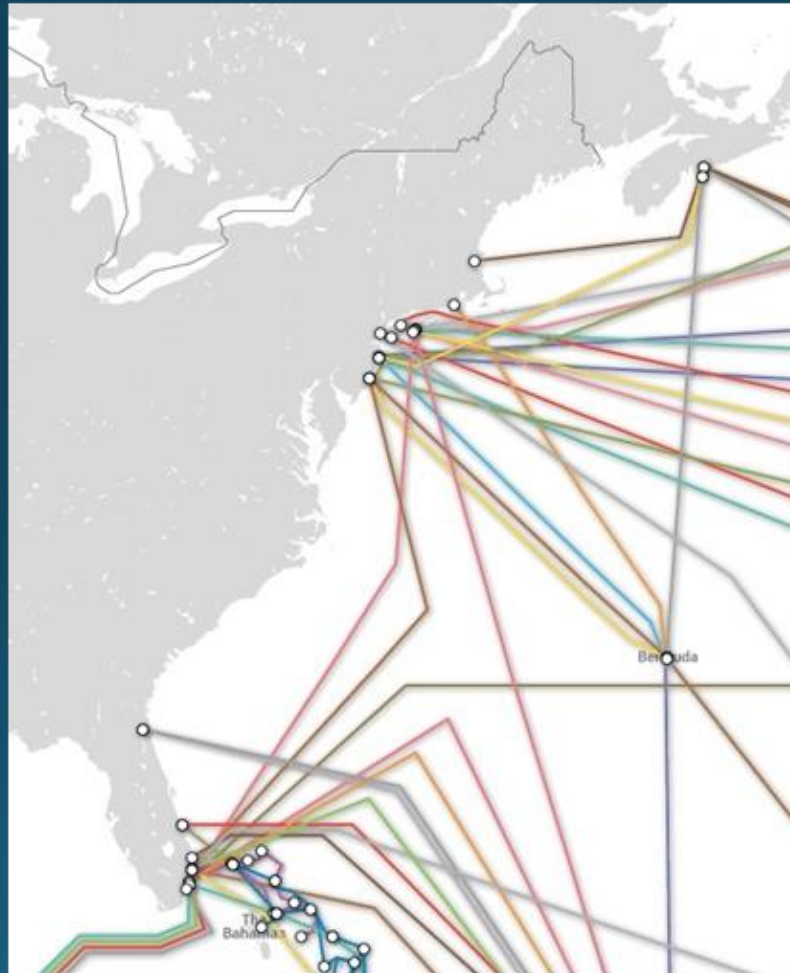




# Maritime Shipping Post-Panamax Locks Project

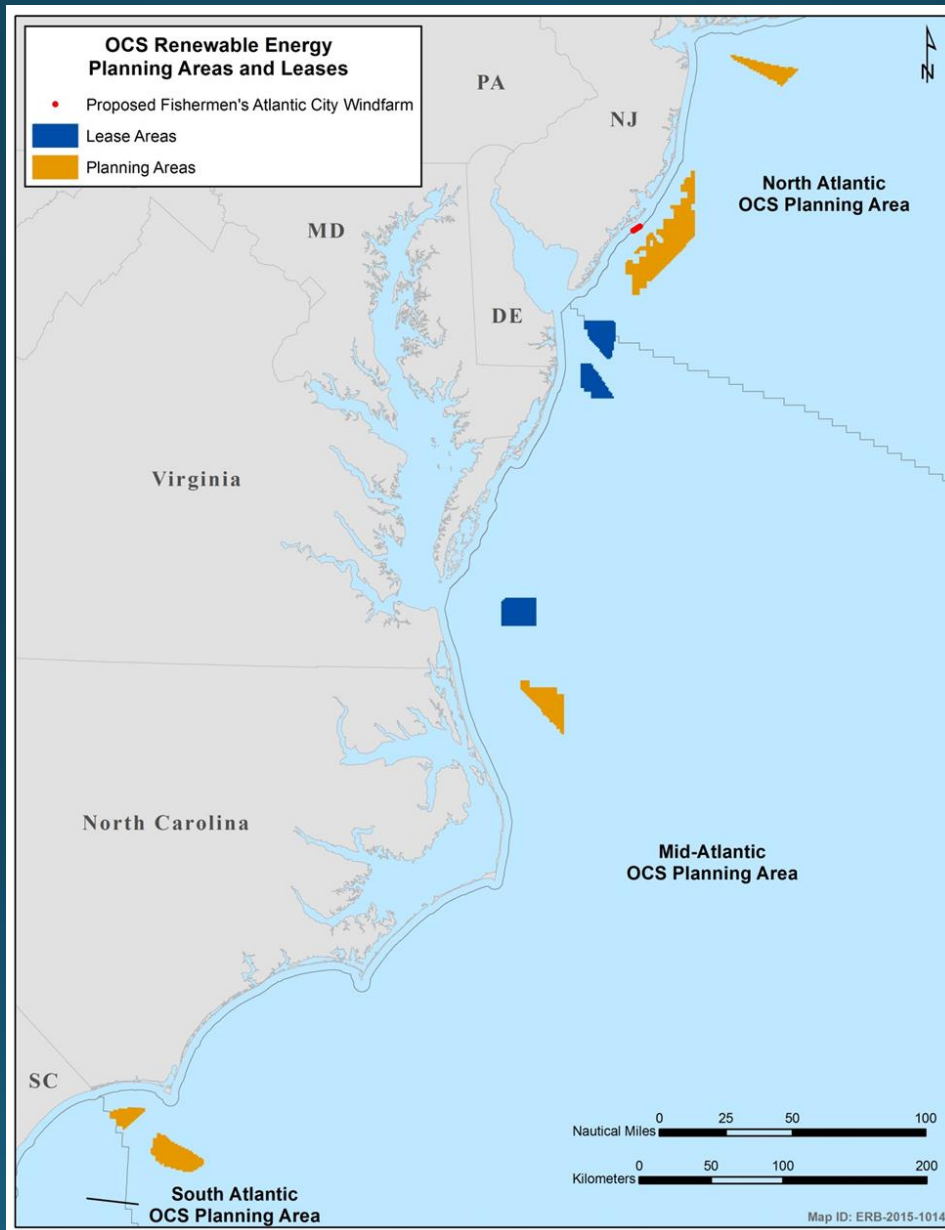


# Communications Infrastructure- Undersea Cable Network



# Wind Energy- Deepwater Foundation Installation

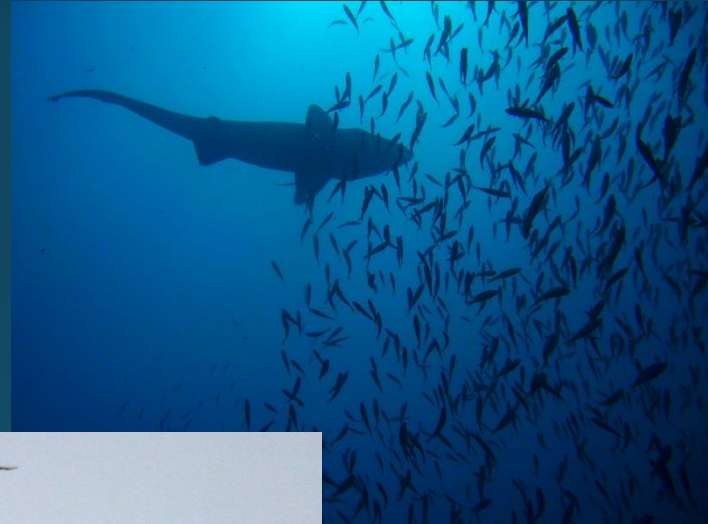






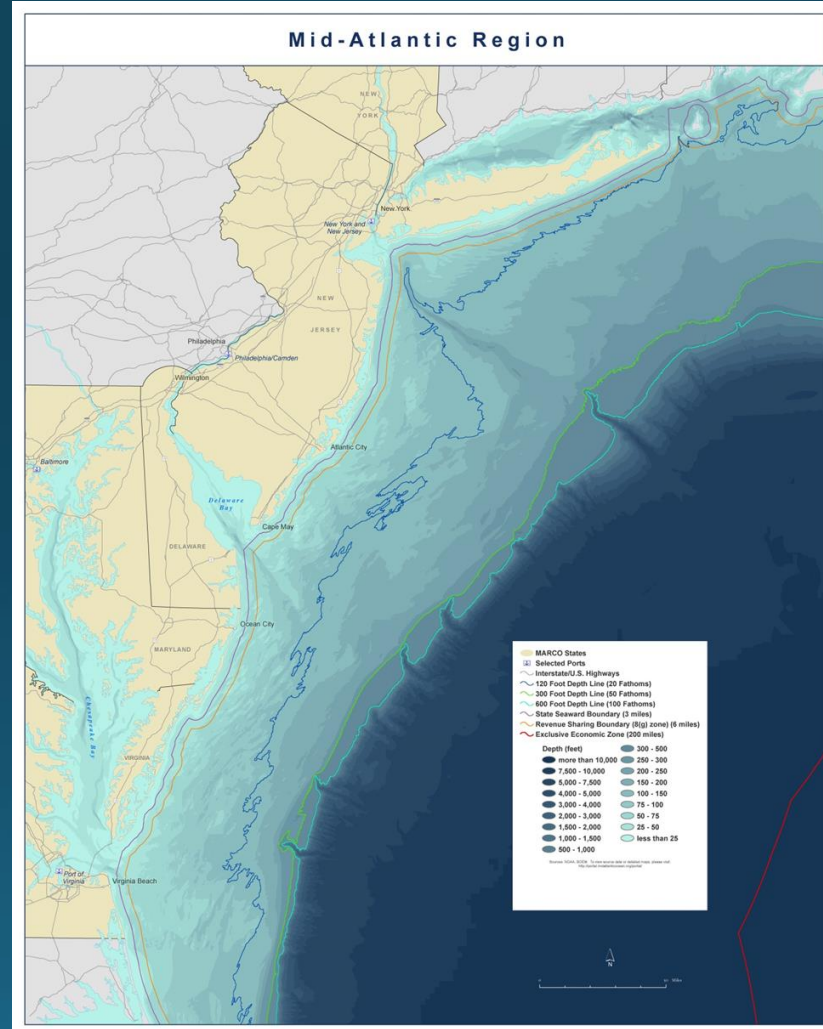
# Conservation Components

## Marine Species and Migrating Corridors

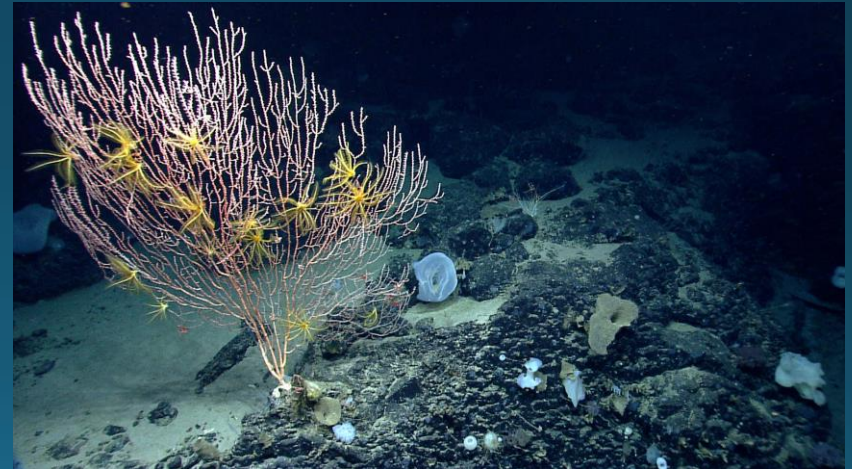
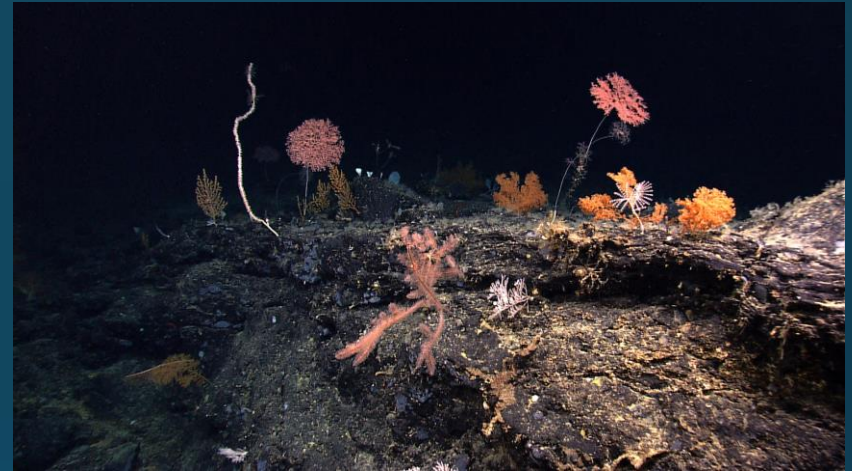




# Ecologically Rich Areas (ERAs) Locations to be Determined



# Deep Water Corals



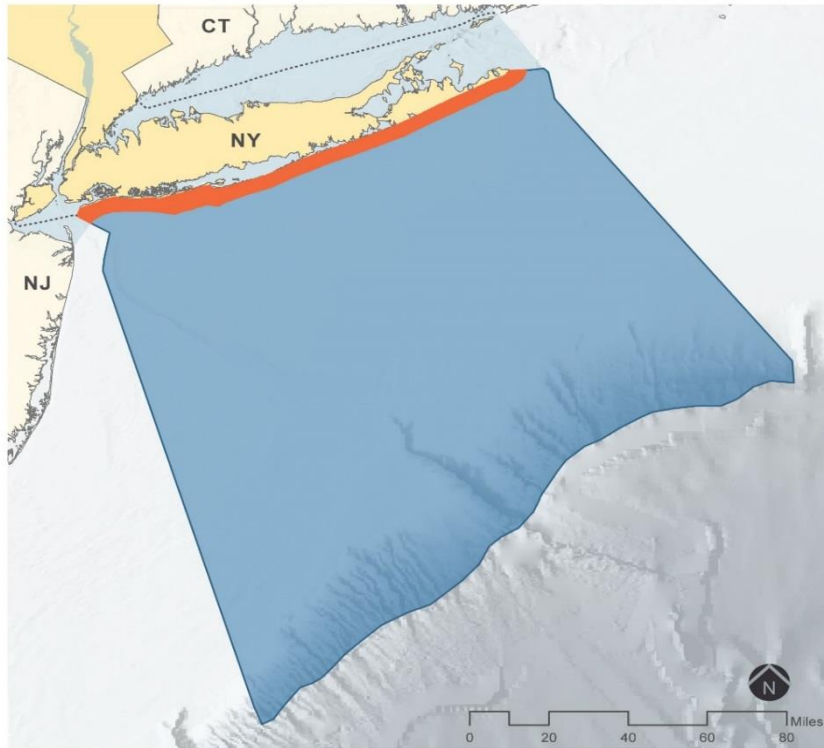
*Image courtesy of NOAA Okeanos Explorer Program, Our Deepwater Backyard: Exploring Atlantic Canyons and Seamounts 2014.*

# NY Participation in MidA RPB Activities

- Provides state information for the MidA Ocean Action Plan (Dec. 2016), Regional Ocean Assessment (Dec. 2015) and Synthesis Maps for Resources and Human Uses (Dec. 2015).
- Enhances collaborative partnerships for monitoring and research.
- Provides guidance for sustainable management of ocean resources.
- Will seek to minimize user conflict.
- Improves regional policy decision-making.
- Ties into the NY Ocean Action Plan currently in draft form.






# Geographic Scope



..... state boundaries (offshore)

## New York State focus areas:

-  new york state territorial ocean waters
-  adjacent federal ocean waters
-  connecting estuaries & embayments



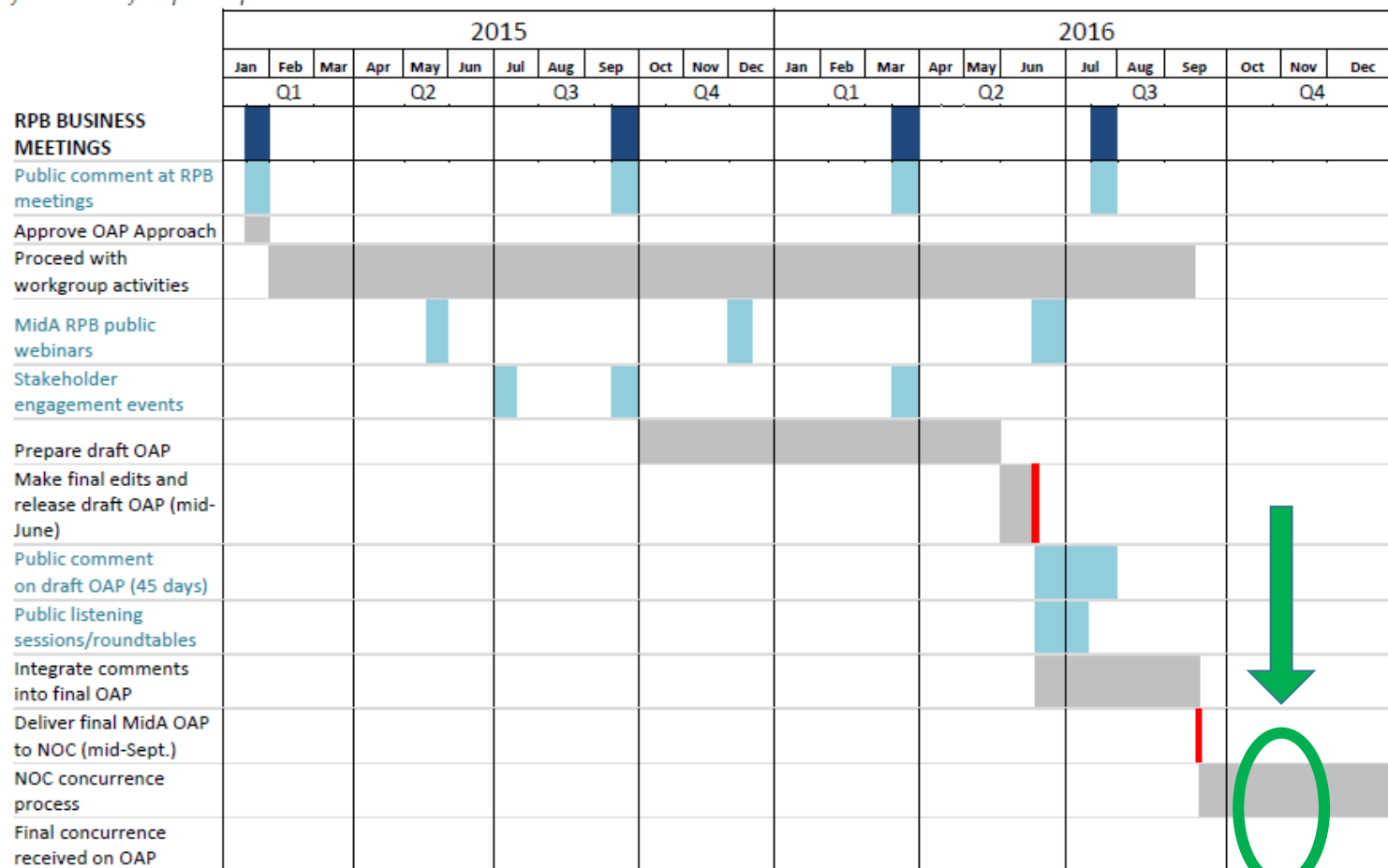
**Inshore waters from New York City to Montauk Point including lagoonal bays of the south shore of Long Island.**

**Offshore waters of the New York Bight out to the edge of the Outer Continental Shelf (OCS)**

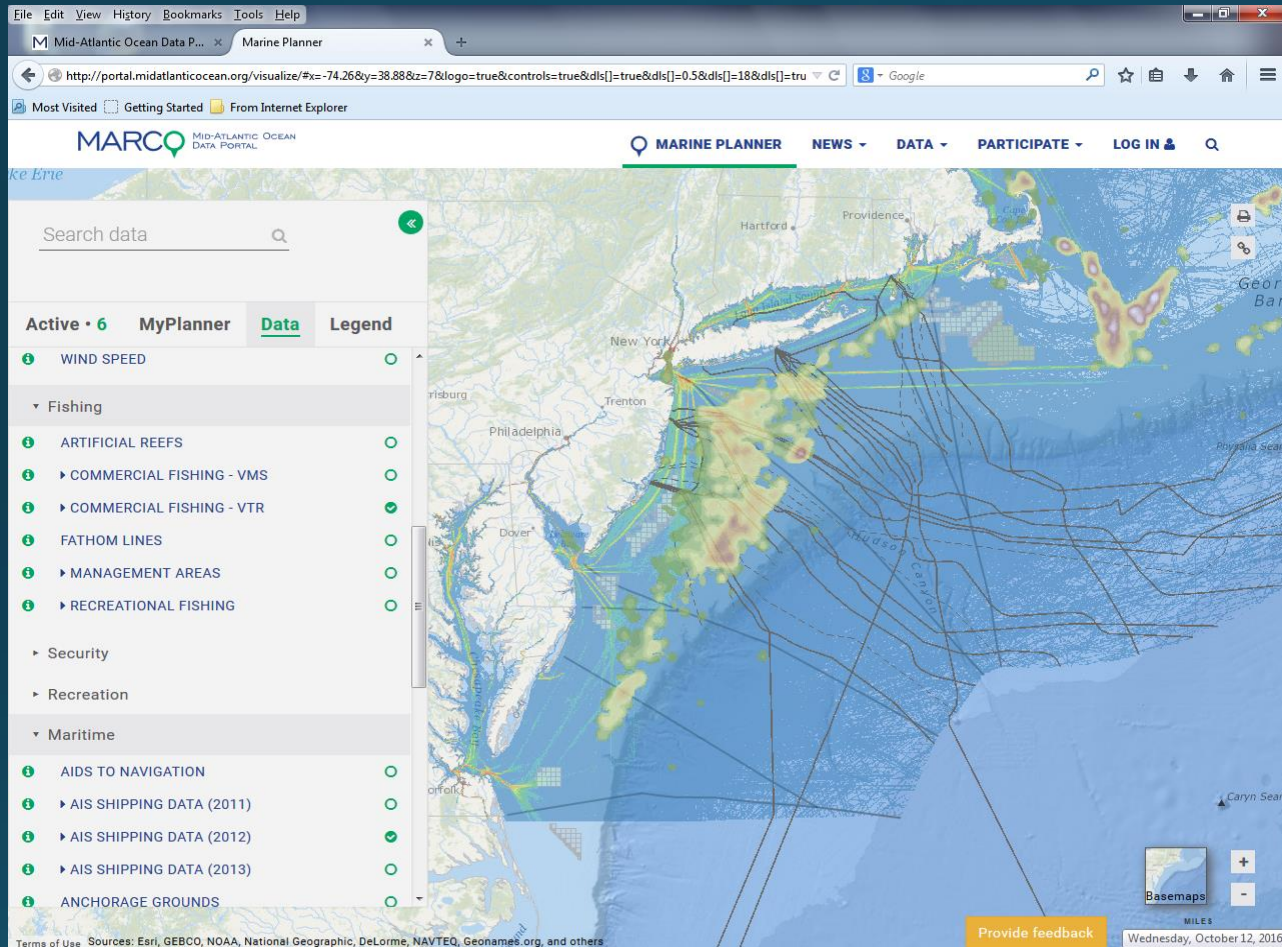
**All connecting estuarine waters**



Notes: Timing subject to change; best current assessment. Light blue indicates stakeholder engagement. Red lines indicate deadlines, some of which are mid-month. Coordination across workgroups will be continuous throughout. Quarters displayed represent calendar year. After NOC concurrence at the end of 2016, focus will shift to plan implementation.



# MARCO Data Portal



Draft Ocean Plan: <http://midatlanticocean.org/youroceanplan/>

MARCO Mid- Atlantic Portal: <http://portal.midatlanticocean.org/ocean-stories/every-map-tells-a-story/>

Ocean Planning video: <http://keeptheoceanworking.com/video-United-states-ocean-plans-maine-to-virginia/>

# Develop an ocean indicators system for the NY Bight

- Develop a suite of ocean indicators to be used as a metric of ecosystem health, including ecosystem services to assess and understand the current state of the ocean, as well as identifying short-term variations and long-term trends in ocean conditions due to natural and anthropogenic drivers.
- Improve understanding of the relationship between water quality, marine habitats, marine wildlife and human use of the ocean.
- Indicators should include biological, chemical, physical, and socio-economic indices.

# Phytoplankton Bloom

August 3, 2015

