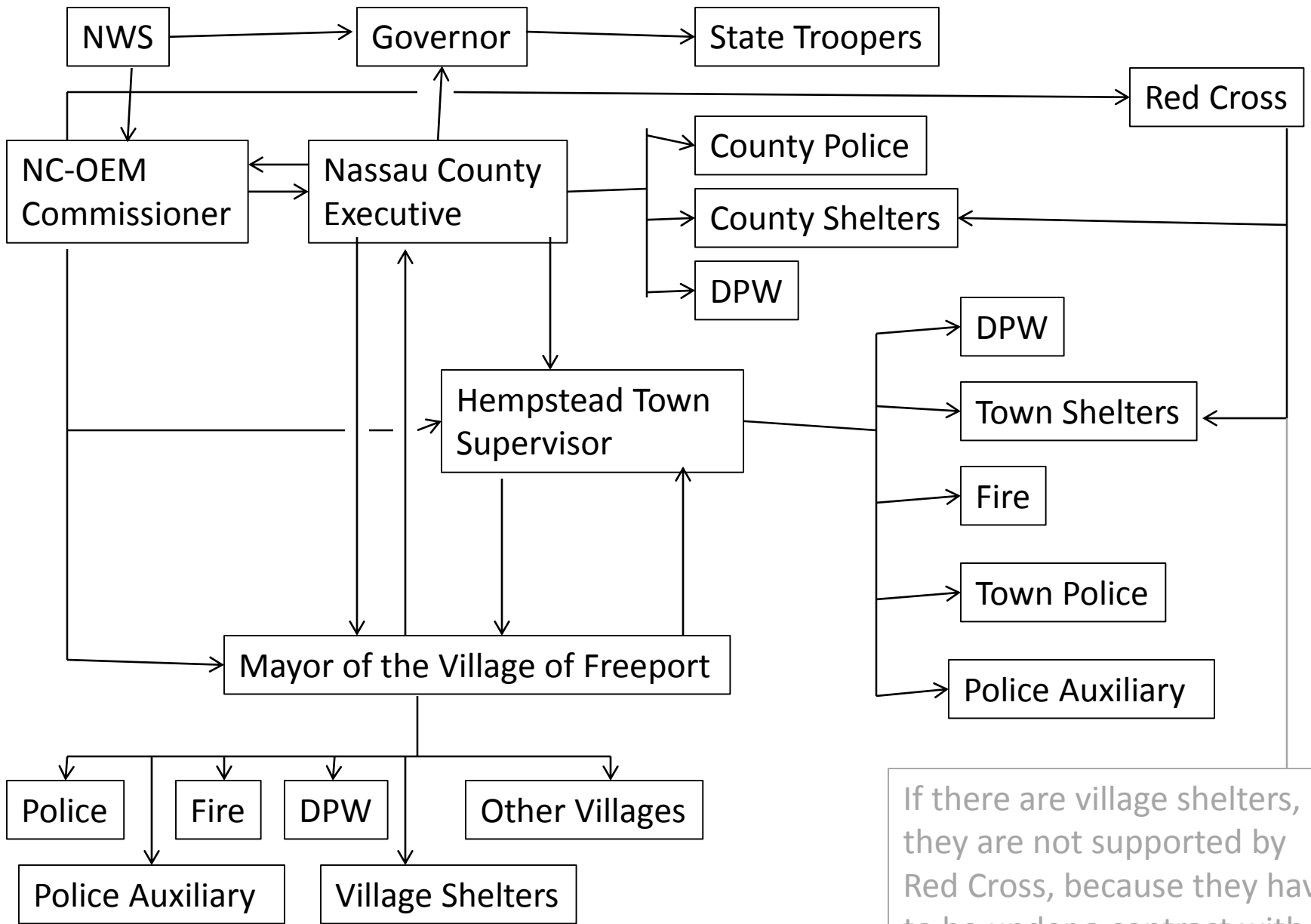


1.1 Assessment of Base Plans – A case study

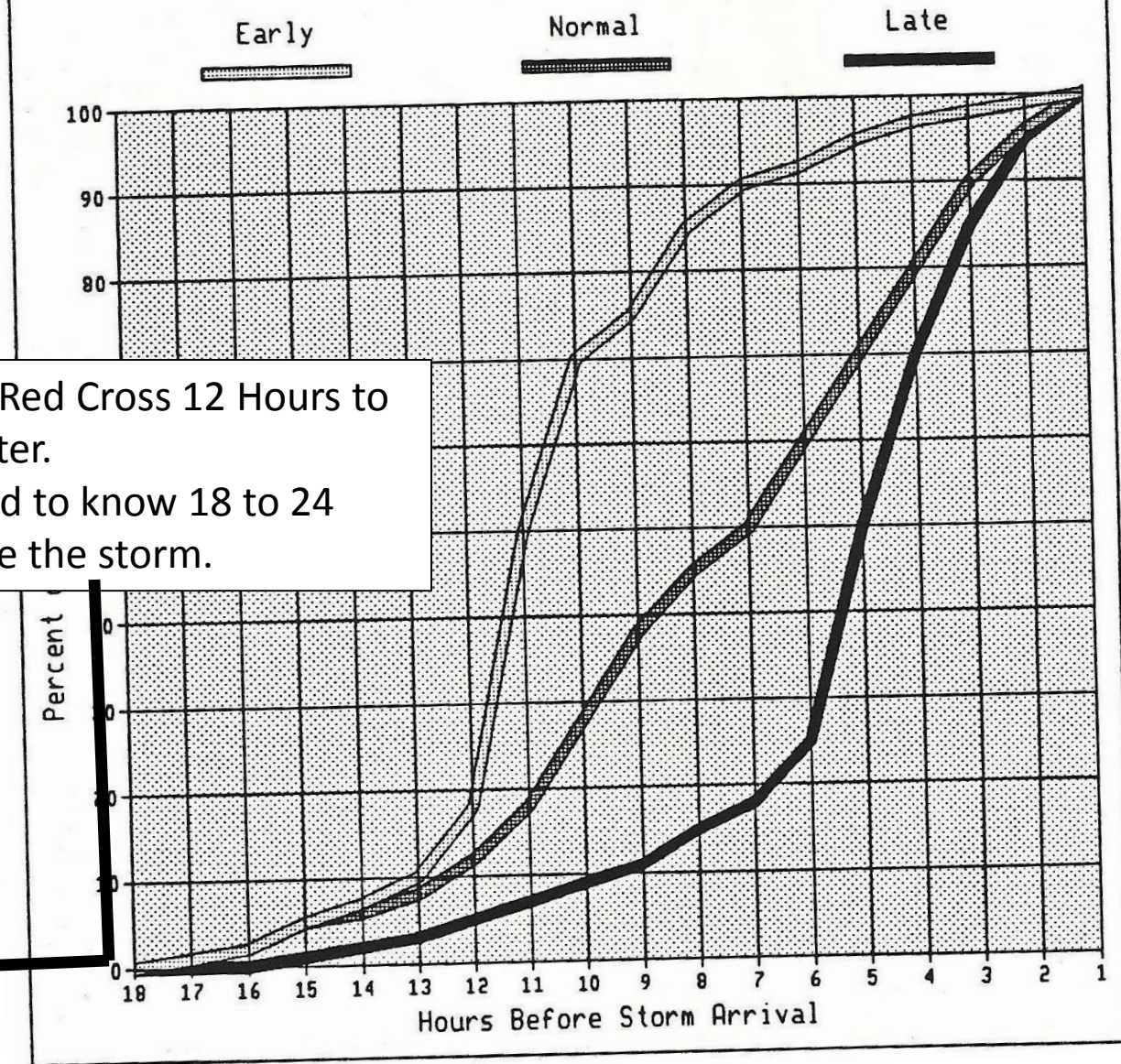
(SBU portion)

Henry Bokuniewicz



If there are village shelters, they are not supported by Red Cross, because they have to be under a contract with Red Cross.

Fig. 1. Cumulative Response Curves for Planning



It takes the Red Cross 12 Hours to open a shelter. So they need to know 18 to 24 hours before the storm.

24