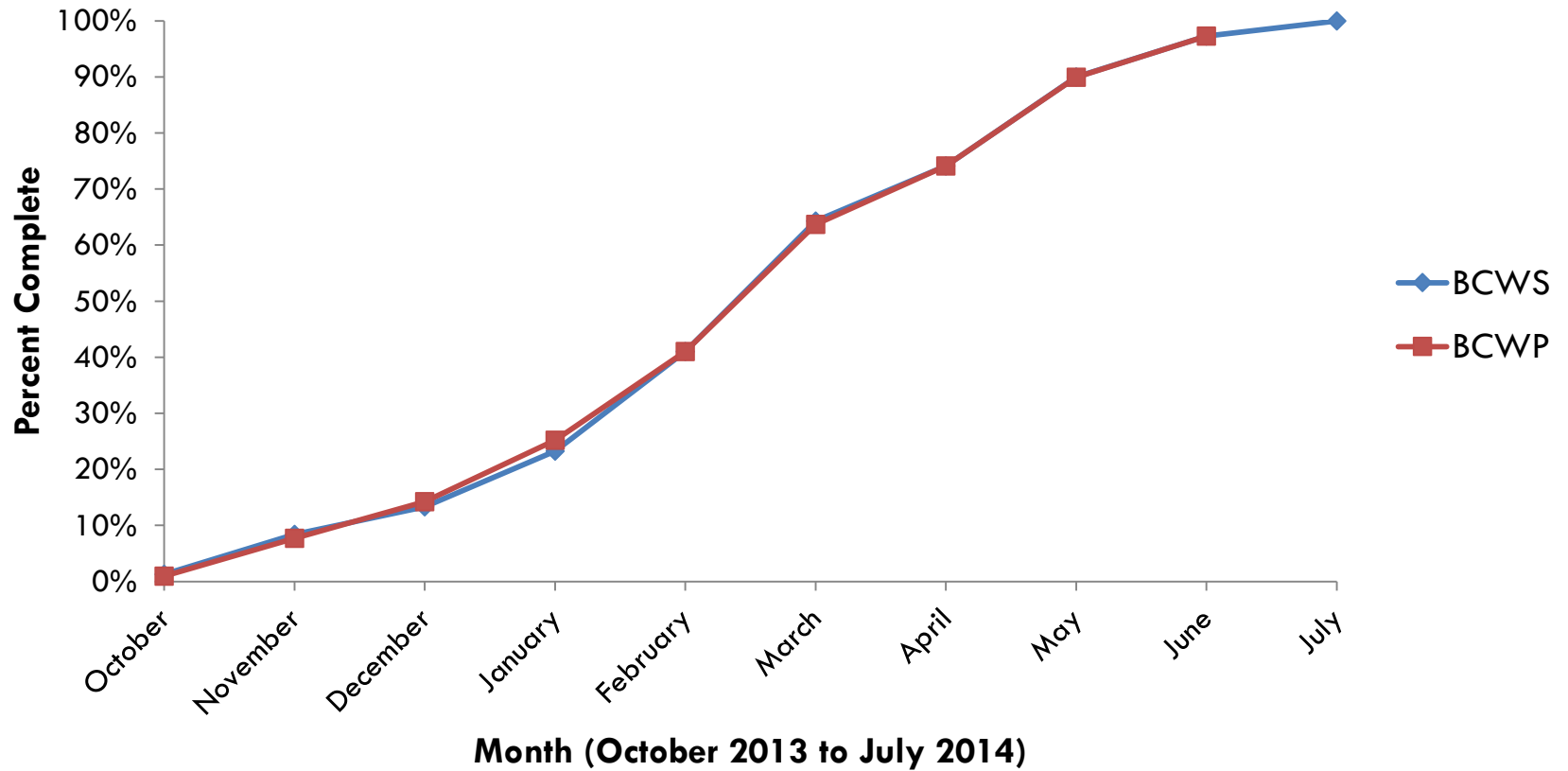


WU 1.1 ASSESSMENT OF BASE PLANS

- What we are supposed to do:
 - Evaluate county level HMP's
 - What impact have they had on reducing flood damage
 - Recommendations to NYS



BCWS & BCWP



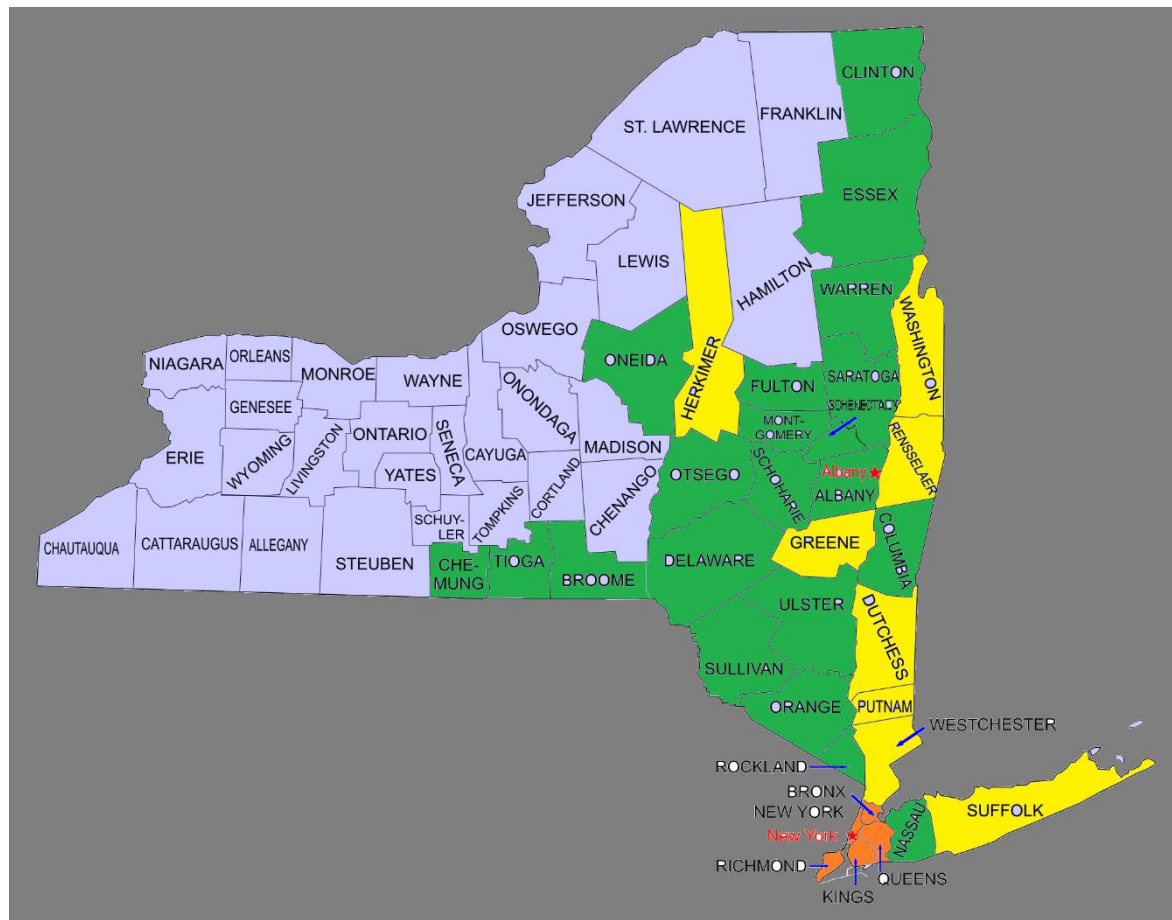
RESILIENCY INSTITUTE FOR
STORMS & EMERGENCIES

LIST OF COUNTIES IN THE SCOPE BASED ON CDBG ACTION PLAN

1. Albany
2. Broome
3. Chemung
4. Clinton
5. Columbia
6. Delaware
7. Fulton
8. Essex
9. Montgomery
10. Nassau
11. Oneida
12. Orange
13. Otsego
14. Rockland
15. Saratoga
16. Schenectady
17. Schoharie
18. Sullivan
19. Tioga
20. Ulster
21. Warren
22. Dutchess
23. Greene
24. Herkimer
25. Putnam
26. Washington
27. Rensselaer
28. Suffolk
29. Westchester

Available HMPs

With out HMPs



CODING PROTOCOL

Binary scale:

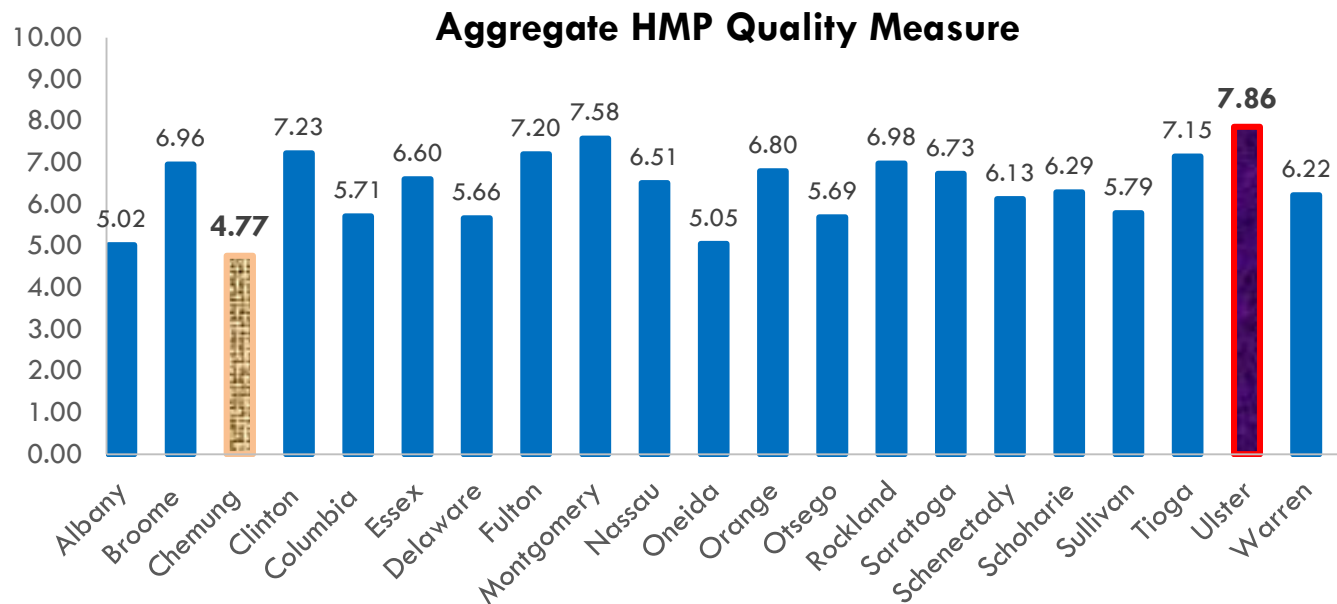
*0 not included and
1 if a brief*

Ordinal scale:

*0 not included,
1 if a brief,
and 2 with a clear &
detailed narrative
description*

Normalize:

All indexes being on a
0.0 to 10.0 scale, which
allows comparability
across principles of
plan quality.



PRINCIPALS

| FEMA Sections and Requirements | Corresponding Principles |
|---|--|
| <p>Risk Assessment Identifies and profiles hazards, assesses vulnerability and estimates potential losses</p> | <p>(Fact Base)</p> |
| <p>Mitigation Strategy Identifies goals; mitigation actions; and implementation information</p> | <p>(Goals) (Policies) (Implementation) { Proposed Action Capability Assessment</p> |
| <p>Planning Process Documents planning process, coordination among agencies and program integration</p> | <p>(Participation)</p> |
| <p>Plan Maintenance Process Monitoring, evaluating and updating the plan and monitoring progress of mitigation actions</p> | <p>(Inter-organizational Coordination) (Monitoring)</p> |



IMPACT ON REDUCING FLOOD DAMAGE

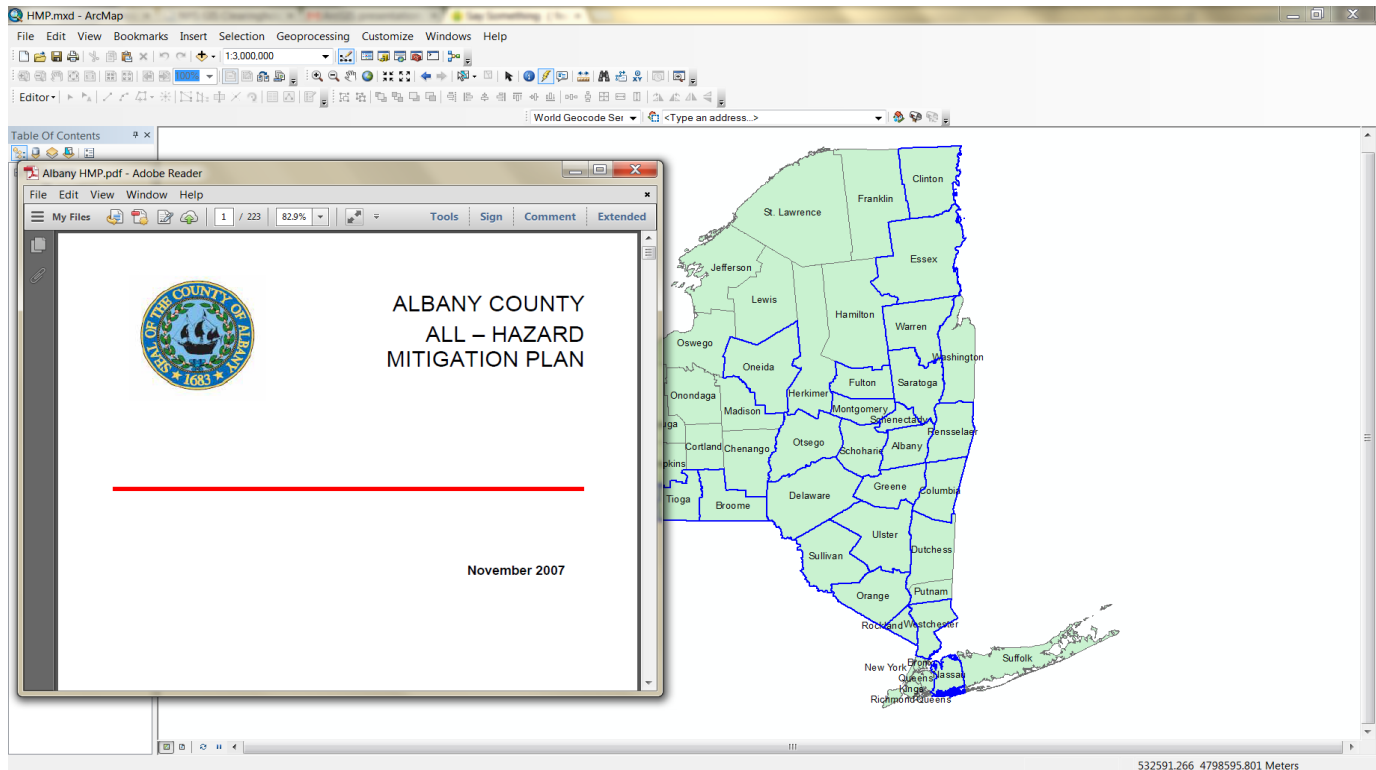
Recommended Project Types by Natural Hazards

| Hazard | Project Type |
|--|---|
| Hurricane / Tropical Storm/Coastal Storm | <ul style="list-style-type: none">• Public Awareness• Tree Pruning• Strengthen/Improve/Enforce Building Codes in Hazard Areas• Wind Resistant Design and Construction• Structural Retrofit• Evacuation Plan• Public Awareness• Strengthen/Improve/Enforce Building Codes in Hazard Areas |
| Climate Change | <ul style="list-style-type: none">• Elevation• Acquisition• Protective Measures for Critical Facilities• Reduce Public Infrastructure within High-Hazard Areas• Identify Locations of Vulnerable Populations• Public Awareness• Planning and Zoning• Acquisition• Relocation |
| Flooding / Dam Failure | <ul style="list-style-type: none">• Protective Measures for Critical Facilities• Storm water Management• Elevation• Wet/Dry Flood Proofing• Reduce Public Infrastructure within High-Hazard Areas• Transfer Development Rights• Property Swap Program |



HMPs ON ARCGIS

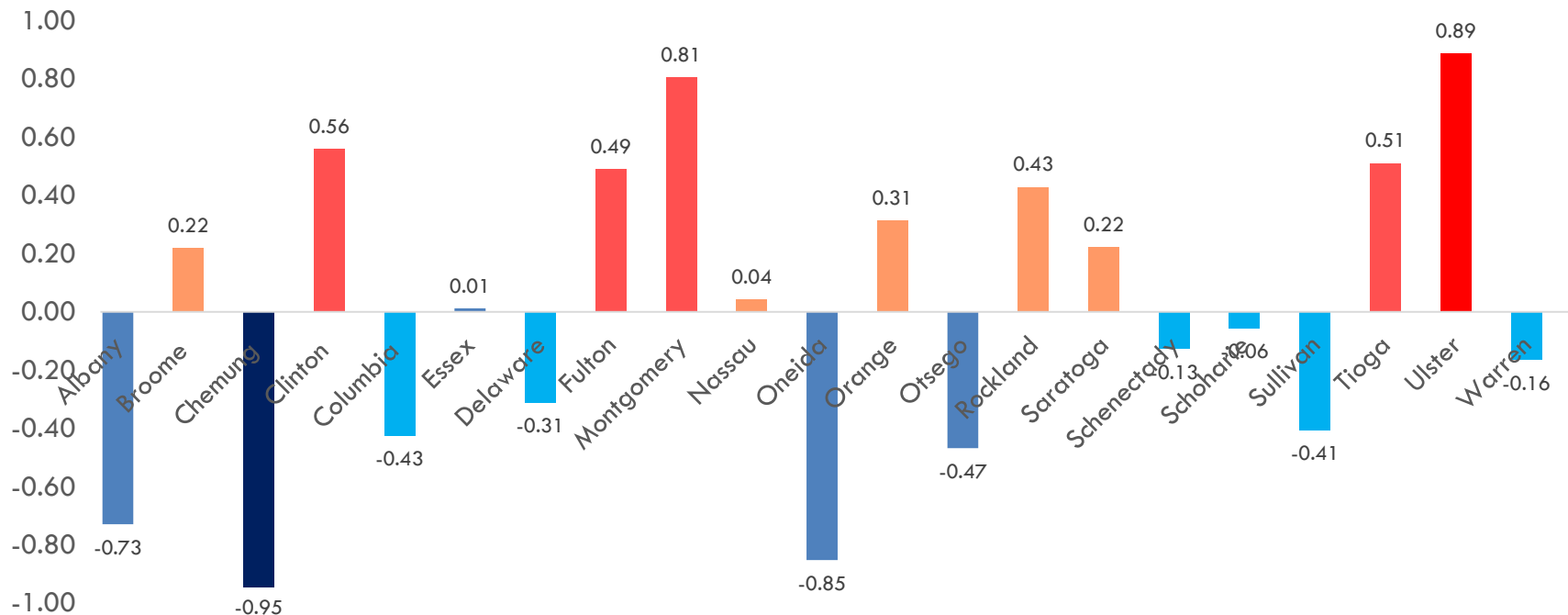
By clicking a desired feature to access **HMP** information, The target document will pop up.



RESILIENCY INSTITUTE FOR
STORMS & EMERGENCIES

RECOMMENDATIONS WILL BE BASED ON THE QUALITY OF HMPs

Comparison between HMPs Standard Deviation



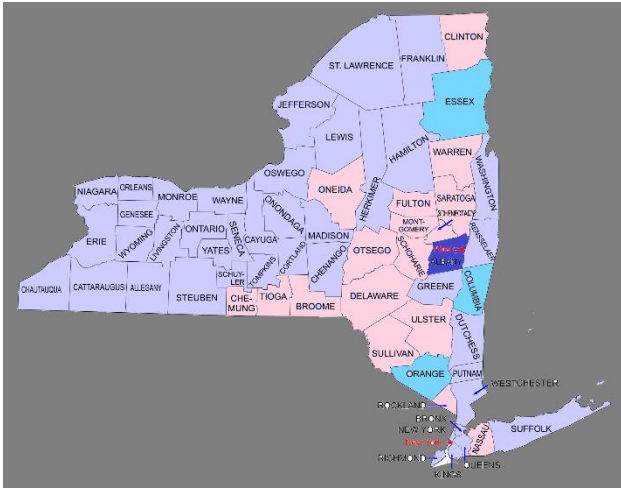
STANDARD DEVIATION FROM THE MEAN

 Excellent

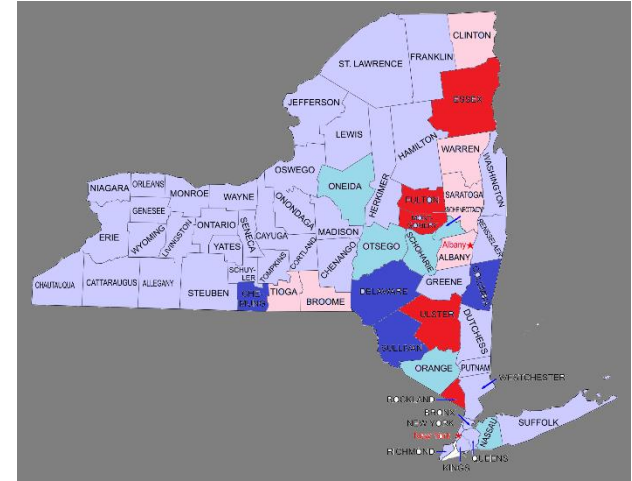
 Fairly Good

 Fairly Bad

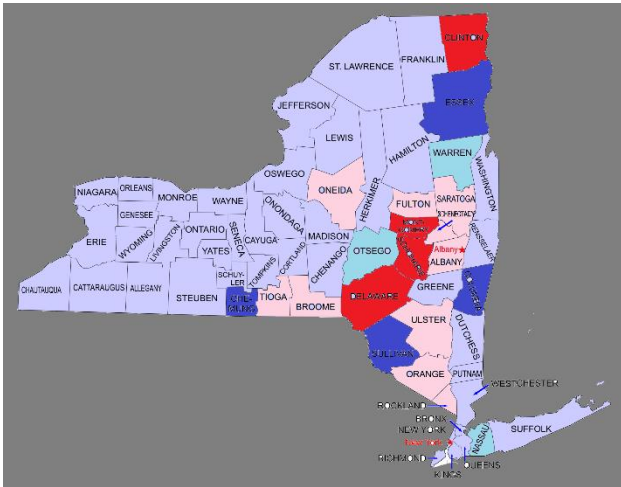
 Bad



Map 1: Plan Basics

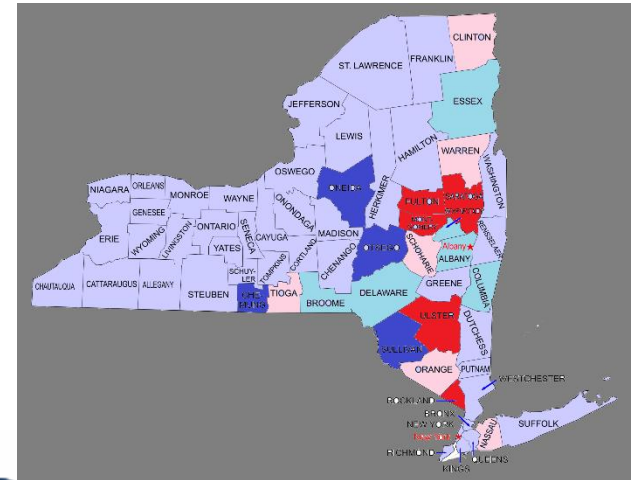


Map 3: Inter Organization Coordination



Map 2: Participation

Those plans more than one standard deviation above the mean are considered higher quality and those plans more than one standard deviation below the mean are considered lower quality.



Map 4: Hazard Identification



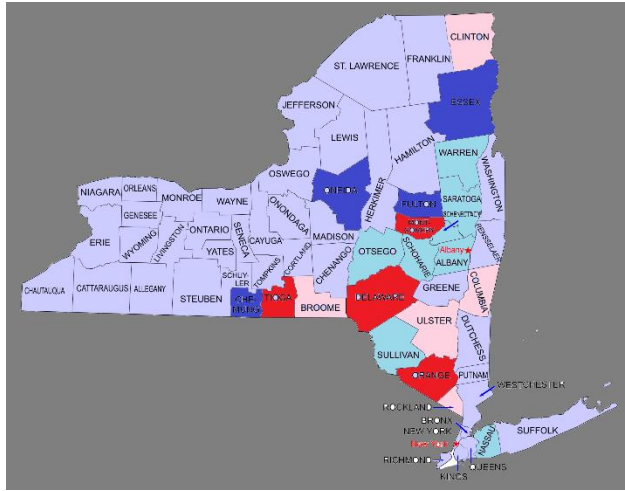
STANDARD DEVIATION FROM THE MEAN

 Excellent

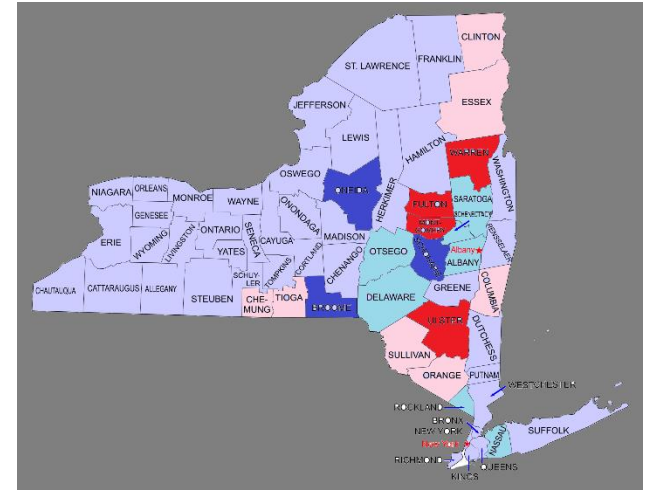
 Fairly Good

 Fairly Bad

 Bad

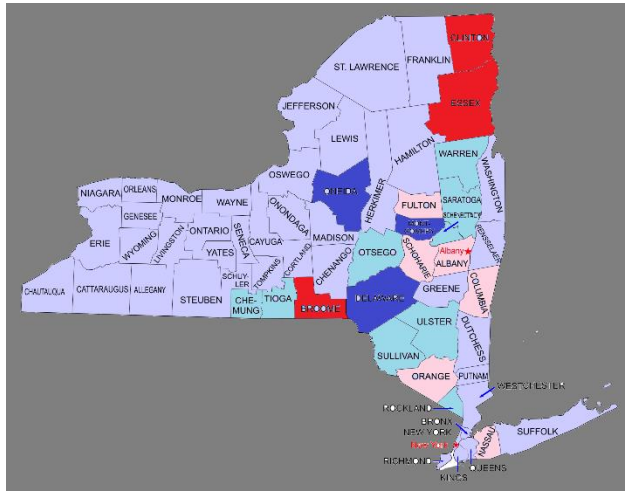


Map 5: Capability Assessment

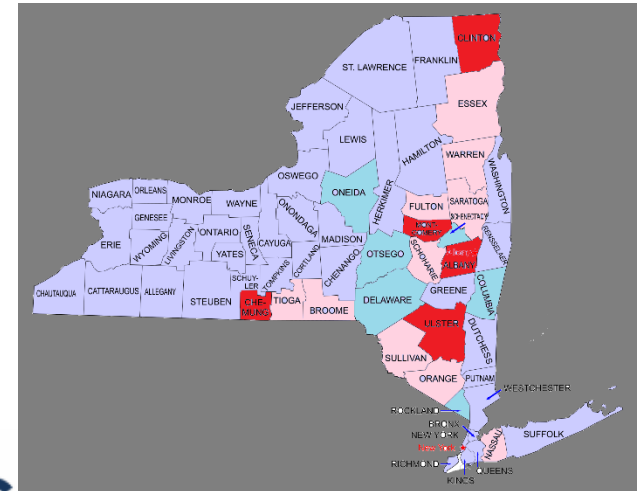


Map 7: Proposed Action

Those plans more than one standard deviation above the mean are considered higher quality and those plans more than one standard deviation below the mean are considered lower quality.

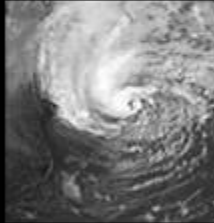


Map 6: Goals



Map 8: Monitoring





NYS RISE

RESILIENCY INSTITUTE FOR
STORMS & EMERGENCIES

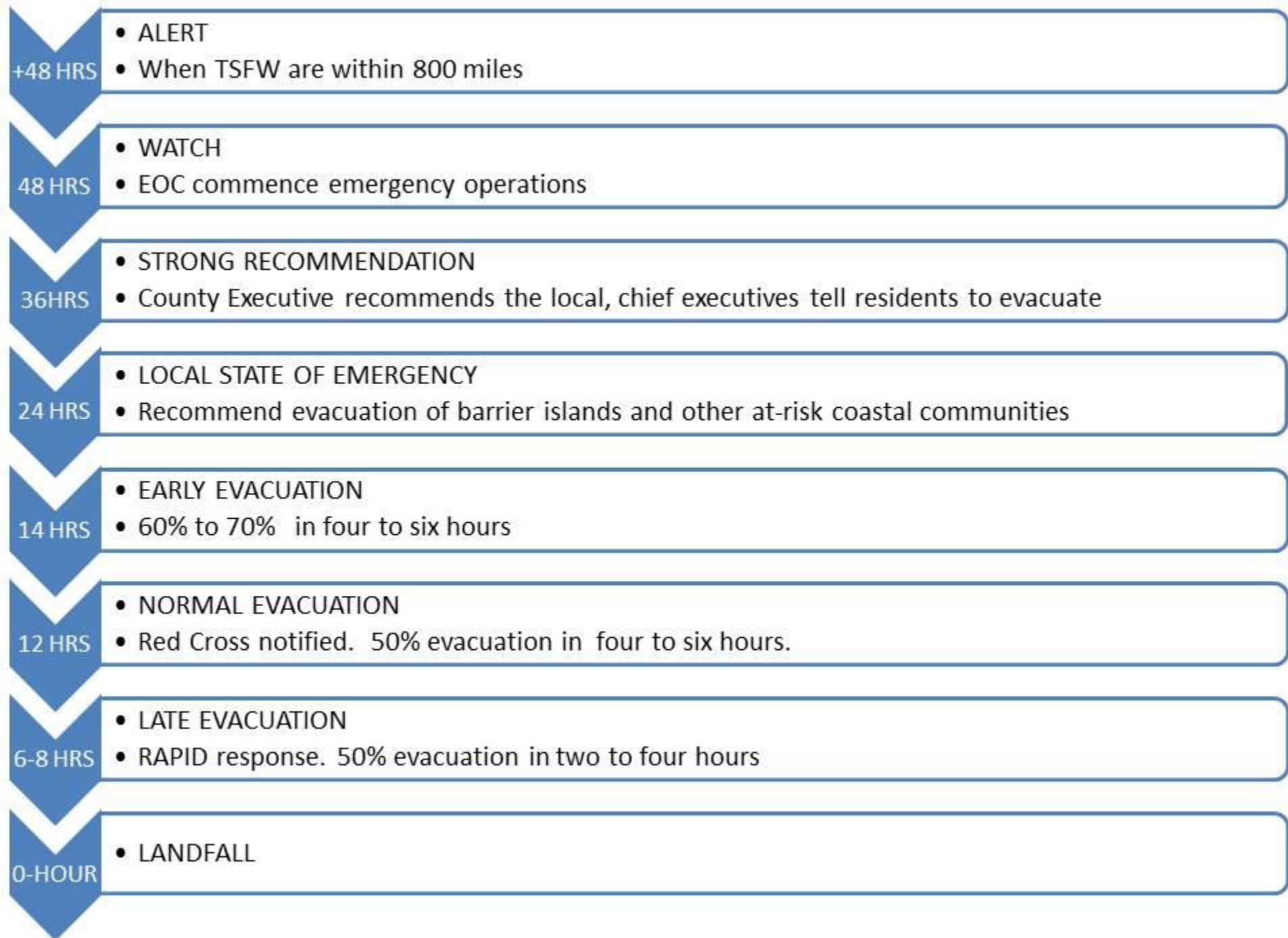
**ASSESSMENT OF THE BASE
EVACUATION PLAN FOR NASSAU
COUNTY
TR-1-14-01**

By

Henry Bokuniewicz
And
Jay Tanski

July 2014

NEW YORK STATE INSTITUTE FOR STORMS AND
EMERGENCIES



+48 HRS

- ALERT
- When TSWF are within 800 miles

48 HRS

- WATCH
- EOC commence emergency operations

36 HRS

- STRONG RECOMMENDATION
- County Executive recommends the local, chief executives tell residents to evacuate

24 HRS

- LOCAL STATE OF EMERGENCY
- Recommend evacuation of barrier islands and other at-risk coastal communities

14 HRS

- EARLY EVACUATION
- 60% to 70% in four to six hours

12 HRS

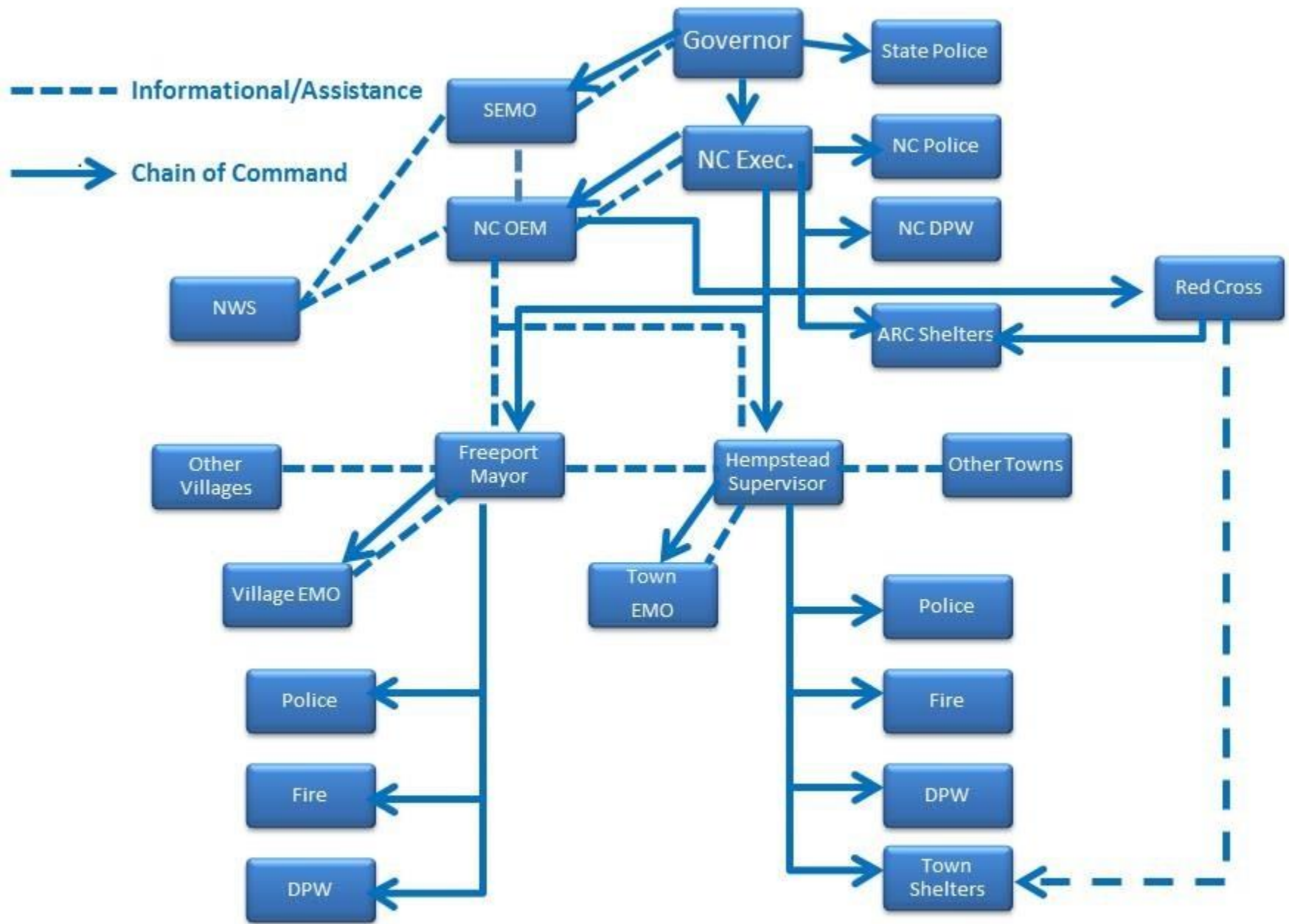
- NORMAL EVACUATION
- Red Cross notified. 50% evacuation in four to six hours.

6-8 HRS

- LATE EVACUATION
- RAPID response. 50% evacuation in two to four hours

0-HOUR

- LANDFALL



BEFORE



AFTER