

NYS RESILIENCY INSTITUTE FOR STORM EMERGENCIES (RISE)

SUB-TASK 2.2

ELECTRIC POWER SYSTEM PERFORMANCE

Faculty Collaborators:

Francisco de Leon (NYU-Poly)

Rae Zimmerman (NYU-Wagner)

Tom O'Rourke (Cornell)

Ph.D. Student:

Julien Sandraz (NYU-Poly)



ELECTRIC POWER SYSTEM PERFORMANCE

Project Objective: To evaluate the performance of the NYC electrical distribution system and areas of vulnerability disclosed by Hurricane Sandy, including interactions between electric power and water bodies (flooding and surge).

System improvements will be proposed to increase resiliency, which may include reinforcing substations against flooding, microgrids, combined heat and power, distributed generation, smart grid technologies, and energy storage.



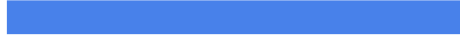
IMPACT ON ELECTRIC POWER SYSTEM

- The current analytical tool allows to visualize:
 - Impact of Hurricanes Categories 1 to 4 (FEMA)
 - Electrical Networks (Con Edison)
 - Impact of Sandy (FEMA)
- Working on:
 - Electrical Customers per Network
 - Number of Customers Affected by Hurricanes (1-4)



HURRICANE IMPACT MAP

Sandy's actual flooding



Predicted surge by hurricane

Category 1



Category 2



Category 3



Category 4



Sandy's flooding & predicted

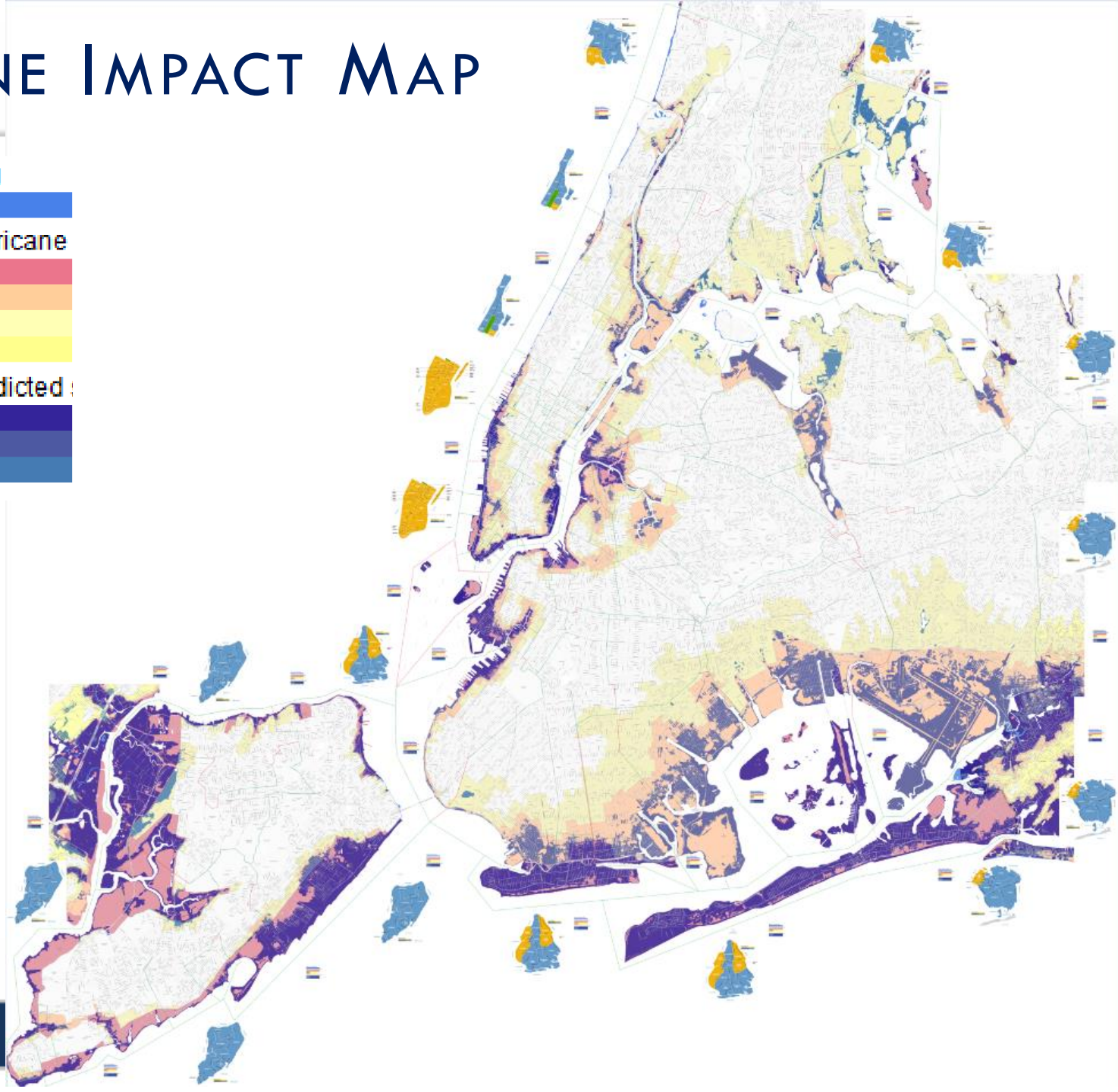
Category 1



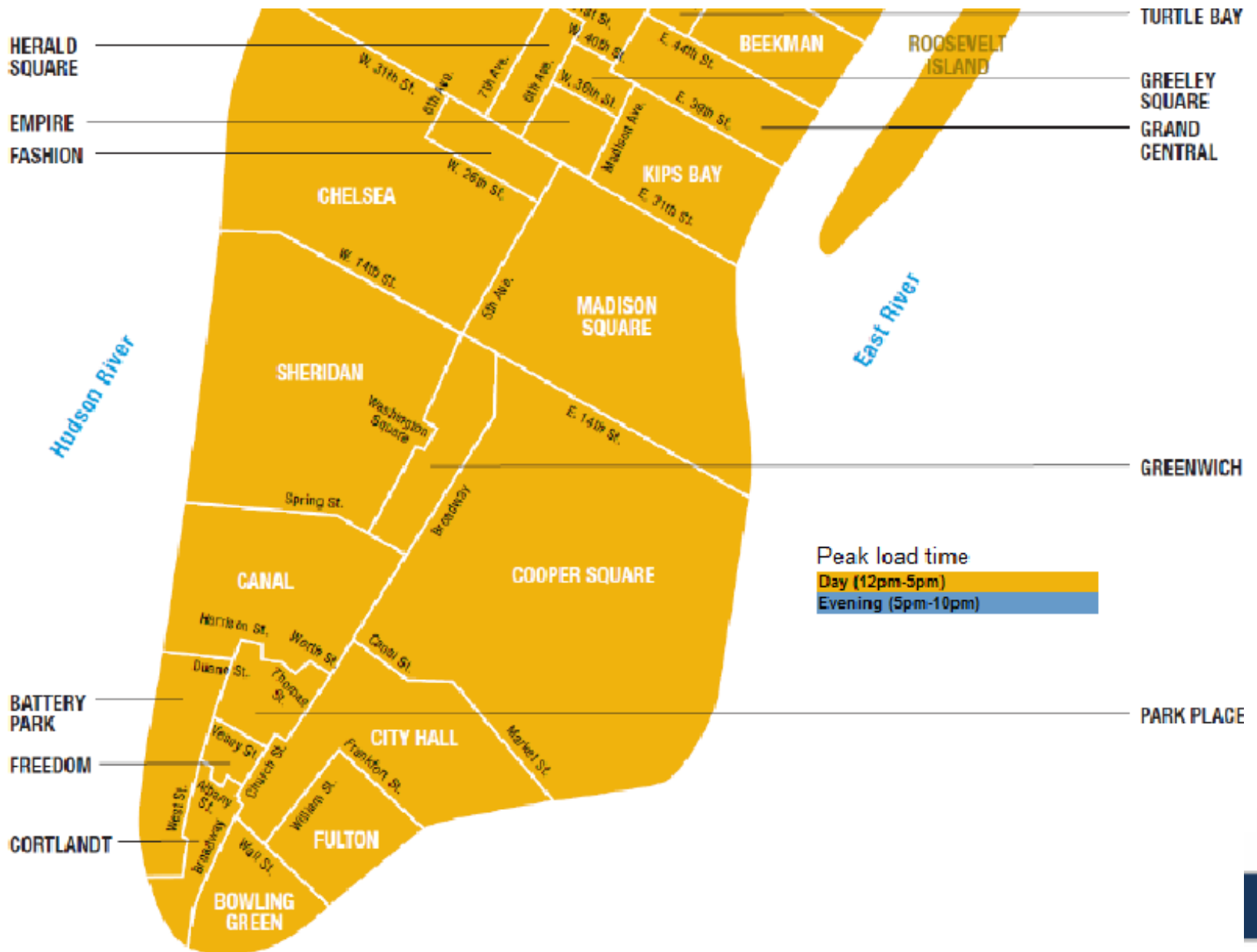
Category 2



Category 3



ELECTRICAL NETWORKS



ZOOMING INTO LOWER MANHATTAN

Sandy's actual flooding

Predicted surge by hurricane

Category 1

Category 2

Category 3

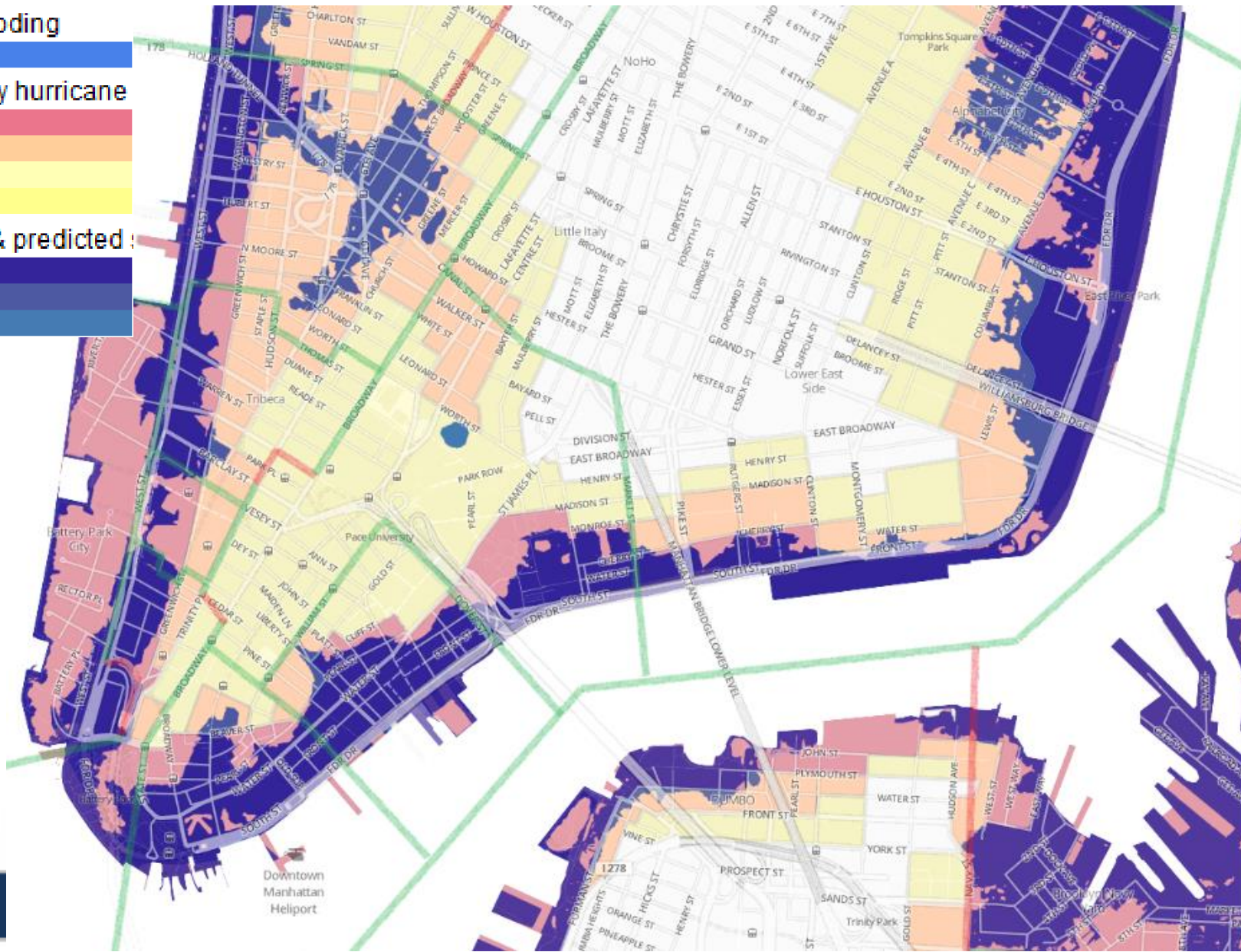
Category 4

Sandy's flooding & predicted

Category 1

Category 2

Category 3



REAL-TIME TOOL DEMONSTRATION

- [Link to file](#)



RESILIENCY INSTITUTE FOR
STORMS & EMERGENCIES

CONCLUSIONS

- A tool has been developed for the analysis of:
 - Impact of Hurricanes Categories 1 to 4 (FEMA)
 - Electrical Networks (Con Edison)
 - Impact of Sandy (FEMA)
- Working on:
 - Electrical Customers per Network
 - Number of Customers Affected by Hurricanes (1-4)

